



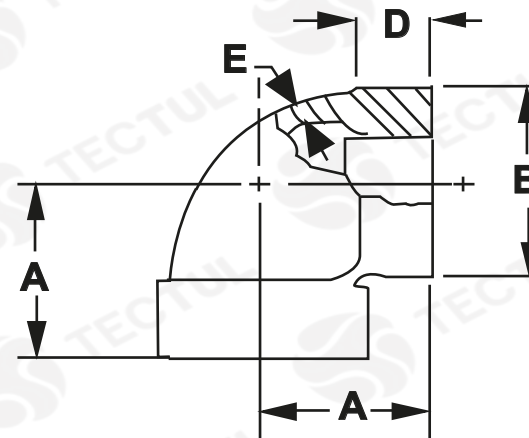
TECTUL

CODO 90° - CLASE 300

MATERIALES

CARACTERÍSTICAS FÍSICAS

CARACTERÍSTICAS DIMENSIONALES



* Vista de sección transversal de tipo informativa. No representa una versión específica del accesorio o elemento.

DATOS TÉCNICOS

MEDIDA	DISTANCIA A CENTRO [mm] (A)	DIAMETRO EXTERNO [mm] (B)	LONGITUD DE ROSCA [mm] (D)	ESPESOR [mm] (E)	PESO [g]
1/4"	24,00*	26,00*	10,93*	2,10*	102*
3/8"	26,00*	30,00*	11,93*	3,81*	131*
1/2"	38,00*	36,00*	14,47*	4,06*	215*
3/4"	42,00*	44,00*	16,25*	4,57*	335*
1"	36,00*	50,00*	19,05*	5,08*	484*
1 1/4"	51,00*	62,00*	21,33*	5,58*	758*
1 1/2"	55,00*	69,00*	22,09*	6,09*	1072*
2"	69,00*	85,00*	25,40*	6,60*	1703*
2 1/2"	74,00*	98,00*	29,71*	7,87*	1870*
3"	85,00*	117,00*	31,24*	8,89*	2800*
4"	91,00*	164,00*	36,19*	11,68*	6500*

* Fotos y medidas referenciales, sujetas a cambios sin previo aviso por parte del proveedor o fabricante.

MATERIALES

Fabricados hierro maleable negro
ASTM A197/A197M

CARACTERÍSTICAS FÍSICAS

Con extremos reforzados. Recomendado para la conducción de aceites, petróleo, gases (GLP/GNV) y vapor

CARACTERÍSTICAS DIMENSIONALES

Dimensiones básicas según la Norma Nacional estadounidense. Con conexión roscada NPT según ANSI/ASME B1.20.1



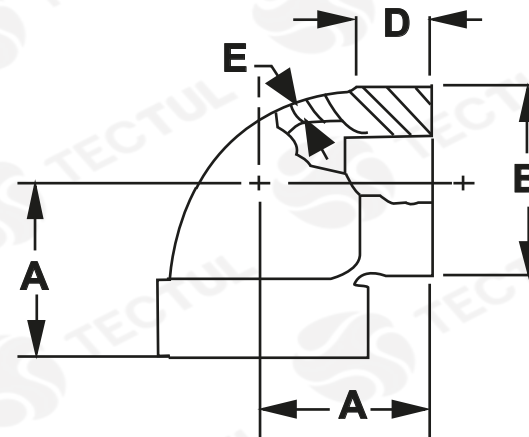
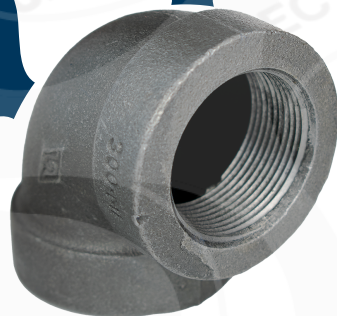
TECTUL

ELBOW 90° - CLASS 300

MATERIALS

PHYSICAL CHARACTERISTICS

DIMENSIONAL CHARACTERISTICS



* Informational cross-sectional view. Does not represent a specific version of the accessory or item.

TECHNICAL DATA

MEASURE	CENTER DISTANCE [mm] (A)	EXTERNAL DIAMETER [mm] (B)	THREAD LENGTH [mm] (D)	THICKNESS [mm] (E)	WEIGHT [g]
1/4"	24,00*	26,00*	10,93*	2,10*	102*
3/8"	26,00*	30,00*	11,93*	3,81*	131*
1/2"	38,00*	36,00*	14,47*	4,06*	215*
3/4"	42,00*	44,00*	16,25*	4,57*	335*
1"	36,00*	50,00*	19,05*	5,08*	484*
1 1/4"	51,00*	62,00*	21,33*	5,58*	758*
1 1/2"	55,00*	69,00*	22,09*	6,09*	1072*
2"	69,00*	85,00*	25,40*	6,60*	1703*
2 1/2"	74,00*	98,00*	29,71*	7,87*	1870*
3"	85,00*	117,00*	31,24*	8,89*	2800*
4"	91,00*	164,00*	36,19*	11,68*	6500*

* Reference photos and measurements, subject to change without prior notice from the supplier or manufacturer.



MATERIALS

Made of black malleable iron
ASTM A197/A197M



PHYSICAL CHARACTERISTICS

With reinforced ends. Recommended for the conduction of oils, petroleum, gases (LPG/NGV) and steam



DIMENSIONAL CHARACTERISTICS

Basic dimensions according to the Standard National American. With threaded connection NPT per ANSI/ASME B1.20.1