



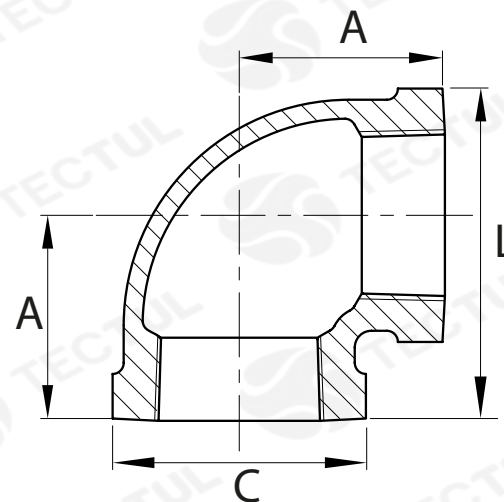
TECTUL

CODO 90° - CLASE 150

MATERIALES

CARACTERÍSTICAS FÍSICAS

CARACTERÍSTICAS DIMENSIONALES



* Vista de sección transversal de tipo informativa. No representa una versión específica del accesorio o elemento.

DATOS TÉCNICOS

| MEDIDA | DISTANCIA A CENTRO [mm] (A) | ALTURA [mm] (L) | DIÁMETRO EXTERNO [mm] (C) | PASO DE ROSCA [H/ln] | PESO [g] |
|--------|-----------------------------|-----------------|---------------------------|----------------------|----------|
| 1/4" | 20,00* | 31,00* | 23,00* | 18 | 46* |
| 3/8" | 24,00* | 37,00* | 27,00* | 18 | 68* |
| 1/2" | 26,00* | 41,00* | 30,00* | 14 | 76* |
| 3/4" | 31,00* | 49,00* | 36,00* | 14 | 132* |
| 1" | 40,00* | 61,00* | 43,00* | 11,5 | 195* |
| 1-1/4" | 47,50* | 69,00* | 53,00* | 11,5 | 321* |
| 1-1/2" | 51,00* | 81,00* | 60,00* | 11,5 | 418* |
| 2" | 58,00 | 94,00* | 73,00* | 11,5 | 860* |
| 2-1/2" | 69,00* | 115,00* | 93,00* | 8 | 1479* |
| 3" | 78,00* | 133,00* | 110,00 | 8 | 2308* |
| 4" | 98,00* | 168,00* | 141,00* | 8 | 4062* |
| 5" | 113,00* | 195,00* | 165,00* | 8 | 6500* |
| 6" | 130,30* | 230,05* | 199,50* | 8 | 7250* |

* Fotos y medidas referenciales, sujetas a cambios sin previo aviso por parte del proveedor o fabricante.

MATERIALES
 Fabricado en hierro maleable galvanizado. Recubierto ASTM A-197 ASTM A153 HOT-DIP (Caliente)

CARACTERÍSTICAS FÍSICAS
 Cumple con los estándares de diseño ANSI/ASME B16.3 y B16.14. Extremos reforzados y estándar UL/FM

CARACTERÍSTICAS DIMENSIONALES
 Dimensiones básicas según la Norma Nacional estadounidense. Con conexión roscada NPT según ANSI/ASME B1.20.1



TECTUL

ELBOW 90° - CLASS 150

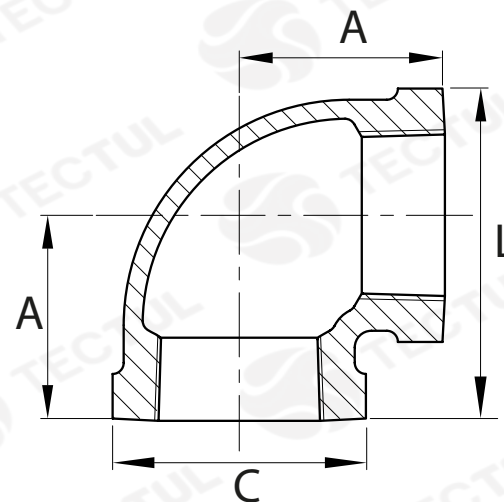
MATERIALS



PHYSICAL CHARACTERISTICS



DIMENSIONAL CHARACTERISTICS



* Informational cross-sectional view. Does not represent a specific version of the accessory or item.

TECHNICAL DATA

| MEASURE | DISTANCE TO CENTER [mm] (A) | HEIGHT [mm] (L) | EXTERNAL DIAMETER [mm] (C) | THREAD PITCH [H/In] | WEIGHT [g] |
|---------|-----------------------------|-----------------|----------------------------|---------------------|------------|
| 1/4" | 20,00* | 31,00* | 23,00* | 18 | 46* |
| 3/8" | 24,00* | 37,00* | 27,00* | 18 | 68* |
| 1/2" | 26,00* | 41,00* | 30,00* | 14 | 76* |
| 3/4" | 31,00* | 49,00* | 36,00* | 14 | 132* |
| 1" | 40,00* | 61,00* | 43,00* | 11,5 | 195* |
| 1-1/4" | 47,50* | 69,00* | 53,00* | 11,5 | 321* |
| 1-1/2" | 51,00* | 81,00* | 60,00* | 11,5 | 418* |
| 2" | 58,00* | 94,00* | 73,00* | 11,5 | 860* |
| 2-1/2" | 69,00* | 115,00* | 93,00* | 8 | 1479* |
| 3" | 78,00* | 133,00* | 110,00* | 8 | 2308* |
| 4" | 98,00* | 168,00* | 141,00* | 8 | 4062* |
| 5" | 113,00* | 195,00* | 165,00* | 8 | 6500* |
| 6" | 130,30* | 230,05* | 199,50* | 8 | 7250* |

* Reference photos and measurements, subject to change without prior notice from the supplier or manufacturer.

MATERIALS



Made of galvanized malleable iron
Coated ASTM A-197
ASTM A153 HOT-DIP (Hot)

PHYSICAL CHARACTERISTICS



Meets design standards
ANSI/ASME B16.3 and B16.14.
Reinforced ends and UL/FM standard

DIMENSIONAL CHARACTERISTICS



Basic dimensions according to the Standard
National American. With threaded
connection NPT per ANSI/ASME B1.20.1