



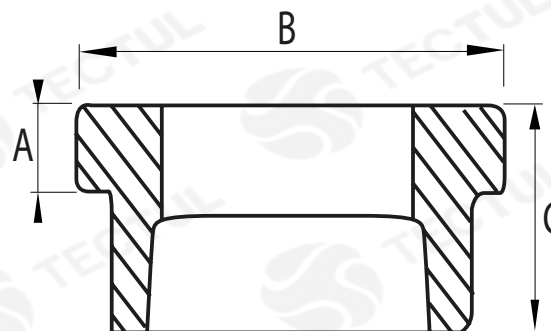
# TECTUL

## BUJE CABEZA HEXAGONAL - CLASE 150

### MATERIALES

### CARACTERÍSTICAS FÍSICAS

### CARACTERÍSTICAS DIMENSIONALES



\* Vista de sección transversal de tipo informativa. No representa una versión específica del accesorio o elemento.

### DATOS TÉCNICOS

MEDIDA	ANCHO ENTRE CARAS PLANAS [mm] (A)	ANCHO ENTRE ARISTAS [mm] (B)	ALTURA [mm] (C)	PESO [g]	MEDIDA	ANCHO ENTRE CARAS PLANAS [mm] (A)	ANCHO ENTRE ARISTAS [mm] (B)	ALTURA [mm] (C)	PESO [g]
3/8" X 1/4"	18,00*	21,00*	21,00*	17*	2" x 1"	9,00*	60,00*	30,00*	283*
1/2" X 3/8"	5,00*	25,00*	26,00*	27*	2" x 1-1/4"	9,00*	73,00*	36,00*	335*
1/2" x 1/4"	5,00*	25,00*	26,00*	36*	2" x 1-1/2"	9,00*	74,00*	35,00*	276*
3/4" X 1/4"	6,00*	34,00*	26,00*	67*	2-1/2" x 1-1/4"	12,00*	83,00*	40,55*	635*
3/4" x 1/2"	6,00*	34,00*	26,00*	48*	2-1/2" x 1-1/2"	12,00*	83,00*	40,55*	635*
3/4" X 3/8"	6,00*	34,00*	26,00*	62*	2-1/2" x 2"	11,00*	82,65*	41,55*	498*
1" x 1/2"	7,00*	42,00*	30,00*	105*	3" x 1"	13,00*	103,00*	43,80*	952*
1" x 3/8"	7,00*	33,00*	29,00*	87*	3" x 1-1/4"	13,00*	103,00*	43,80*	952*
1" x 3/4"	7,00*	42,00*	30,00*	81*	3" x 1-1/2"	13,00*	87,90*	43,80*	997*
1-1/4" x 3/8"	8,00*	33,00*	30,00*	131*	3" x 2"	12,20*	102,70*	47,80*	908*
1-1/4" x 1/2"	8,00*	53,00*	32,00*	186*	3" x 2-1/2"	13,00*	108,35*	47,80*	822*
1-1/4" x 3/4"	7,00*	51,00*	30,00*	106*	4" x 1"	14,00*	108,36*	49,50*	930*
1-1/4" x 1"	7,00*	52,00*	30,00*	130*	4" x 1-1/2"	14,00*	125,00*	48,50*	1235*
1-1/2" x 1/2"	10,00*	39,00*	31,00*	172*	4" x 2"	15,00*	125,00*	49,50*	1225*
1-1/2" x 3/4"	10,00*	49,00*	31,00*	198*	4" x 2-1/2"	15,00*	125,00*	49,50*	1369*
1-1/2" x 1"	10,00*	59,00*	32,00*	211*	4" x 3"	12,70*	130,00*	49,50*	1462*
1-1/2" x 1-1/4"	10,00*	59,00*	33,00*	151*	6" x 3"	29,00*	172,80*	57,35*	2740*
2" x 1/2"	11,00*	60,00*	35,00*	238*	6" x 2"	29,00*	172,80*	57,35*	2705*
2" x 3/4"	11,00*	60,00*	35,00*	272*	6" x 4"	29,00*	172,80*	57,35*	2863*

\* Fotos y medidas referenciales, sujetas a cambios sin previo aviso por parte del proveedor o fabricante.

### MATERIALES

Fabricado en hierro maleable negro  
Recubierto ASTM A-197  
ASTM A153 HOT-DIP (Caliente)

### CARACTERÍSTICAS FÍSICAS

Cumple con los estándares de diseño  
ANSI/ASME B16.3 y B16.14.  
Extremos reforzados y estándar UL/FM

### CARACTERÍSTICAS DIMENSIONALES

Dimensiones básicas según la Norma  
Nacional estadounidense. Con conexión  
roscada NPT según ANSI/ASME B1.20.1



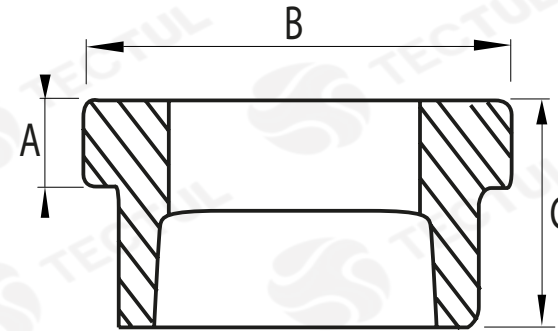
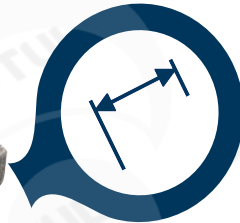
# TECTUL

## OUTSIDE HEX BUSHING - CLASS 150

### MATERIALS

### PHYSICAL CHARACTERISTICS

### DIMENSIONAL CHARACTERISTICS



\* Informational cross-sectional view. Does not represent a specific version of the accessory or item.

### TECHNICAL DATA

MEASURE	WIDTH BETWEEN FLAT SIDES [mm] (A)	WIDTH BETWEEN EDGES [mm] (B)	HEIGHT [mm] (C)	WEIGHT [g]	MEASURE	WIDTH BETWEEN FLAT SIDES [mm] (A)	WIDTH BETWEEN EDGES [mm] (B)	HEIGHT [mm] (C)	WEIGHT [g]
3/8" X 1/4"	18,00*	21,00*	21,00*	17*	2" x 1"	9,00*	60,00*	30,00*	283*
1/2" X 3/8"	5,00*	25,00*	26,00*	27*	2" x 1-1/4"	9,00*	73,00*	36,00*	335*
1/2" x 1/4"	5,00*	25,00*	26,00*	36*	2" x 1-1/2"	9,00*	74,00*	35,00*	276*
3/4" X 1/4"	6,00*	34,00*	26,00*	67*	2-1/2" x 1-1/4"	12,00*	83,00*	40,55*	635*
3/4" x 1/2"	6,00*	34,00*	26,00*	48*	2-1/2" x 1-1/2"	12,00*	83,00*	40,55*	635*
3/4" X 3/8"	6,00*	34,00*	26,00*	62*	2-1/2 x 2"	11,00*	82,65*	41,55*	498*
1" x 1/2"	7,00*	42,00*	30,00*	105*	3" x 1"	13,00*	103,00*	43,80*	952*
1" x 3/8"	7,00*	33,00*	29,00*	87*	3" x 1-1/4"	13,00*	103,00*	43,80*	952*
1" x 3/4"	7,00*	42,00*	30,00*	81*	3" x 1-1/2"	13,00*	87,90*	43,80*	997*
1-1/4" x 3/8"	8,00*	33,00*	30,00*	131*	3" x 2"	12,20*	102,70*	47,80*	908*
1-1/4" x 1/2"	8,00*	53,00*	32,00*	186*	3" x 2-1/2"	13,00*	108,35*	47,80*	822*
1-1/4" x 3/4"	7,00*	51,00*	30,00*	106*	4" x 1"	14,00*	108,36*	49,50*	930*
1-1/4" x 1"	7,00*	52,00*	30,00*	130*	4" x 1-1/2"	14,00*	125,00*	48,50*	1235*
1-1/2" x 1/2"	10,00*	39,00*	31,00*	172*	4" x 2"	15,00*	125,00*	49,50*	1225*
1-1/2" x 3/4"	10,00*	49,00*	31,00*	198*	4" x 2-1/2"	15,00*	125,00*	49,50*	1369*
1-1/2" x 1"	10,00*	59,00*	32,00*	211*	4" x 3"	12,70*	130,00*	49,50*	1462*
1-1/2" x 1-1/4"	10,00*	59,00*	33,00*	151*	6" x 3"	29,00*	172,80*	57,35*	2740*
2" x 1/2"	11,00*	60,00*	35,00*	238*	6" x 2"	29,00*	172,80*	57,35*	2705*
2" x 3/4"	11,00*	60,00*	35,00*	27*	6" x 4"	29,00*	172,80*	57,35*	2863*

\* Reference photos and measurements, subject to change without prior notice from the supplier or manufacturer.

### MATERIALS

Made of black malleable iron  
ASTM A-197 coated  
ASTM A153 HOT-DIP (Hot)

### PHYSICAL CHARACTERISTICS

Meet design standards  
ANSI/ASME B16.3 and B16.14.  
UL/FM standard and reinforced ends

### DIMENSIONAL CHARACTERISTICS

Basic dimensions according to the Standard  
National American. With threaded  
connection NPT per ANSI/ASME B1.20.1