



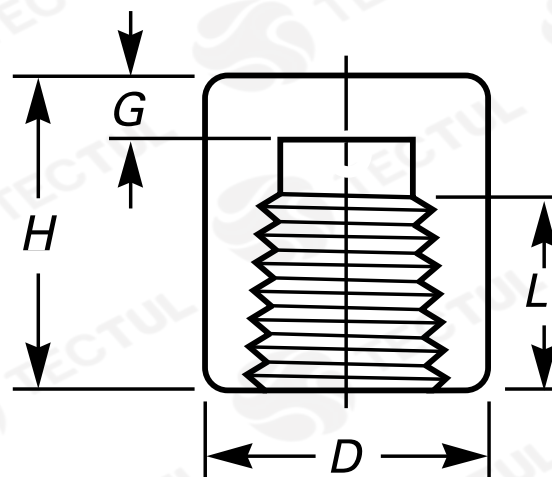
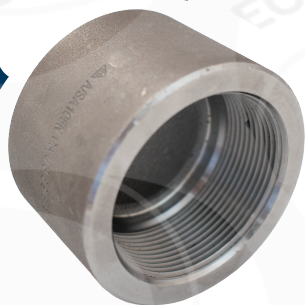
TECTUL

TAPÓN HEMBRA - CLASE 3000

MATERIALES

CARACTERÍSTICAS FÍSICAS

CARACTERÍSTICAS DIMENSIONALES



* Vista de sección transversal de tipo informativa. No representa una versión específica del accesorio o elemento.

MATERIALES

Fabricados en acero forjado
ASTM A105

CARACTERÍSTICAS FÍSICAS

Posee extremos reforzados. Ideal para la
conducción de gases, petróleo,
lubricantes, vapor y aceites industriales.

CARACTERÍSTICAS DIMENSIONALES

Dimensiones básicas según la Norma
Nacional estadounidense. Con conexión
roscada NPT según ANSI/ASME B1.20.1

DATOS TÉCNICOS

MEDIDA	LONGITUD DE ROSCA [mm] (L)	ALTURA [mm] (P)	ANCHO [mm] (H)	ESPESOR [mm] (G)	PESO [g]
1/4"	10,20*	26,00*	19,00*	4,80*	40*
3/8"	10,40*	26,00*	22,00*	4,80*	50*
1/2"	13,60*	33,00*	28,50*	6,40*	110*
3/4"	13,90*	38,10*	35,00*	6,40*	180*
1"	17,30*	42,90*	44,50*	9,70*	330*
1 1/4"	18,00*	45,20*	57,00*	9,70*	620*
1 1/2"	18,40*	49,00*	64,00*	11,20*	720*
2"	19,20*	57,00*	76,20*	12,70*	1090*
2 1/2"	28,90*	60,00*	92,10*	15,70*	1920*
3"	30,50*	65,00*	108,00*	19,00*	2910*
4"	33,00*	68,20*	140,00*	22,00*	4840*

* Fotos y medidas referenciales, sujetas a cambios sin previo aviso por parte del proveedor o fabricante.



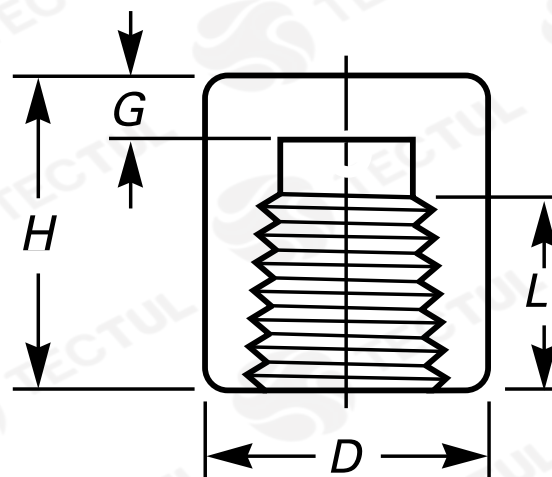
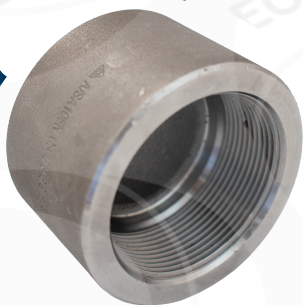
TECTUL

CAP - CLASS 3000

MATERIALS

PHYSICAL CHARACTERISTICS

DIMENSIONAL CHARACTERISTICS



* Informational cross-sectional view. Does not represent a specific version of the accessory or item.

MATERIALS
Made of forged steel
ASTM A105

PHYSICAL CHARACTERISTICS
It has reinforced ends. Ideal for
conduction of gases, oil, lubricants,
steam and industrial oils.

DIMENSIONAL CHARACTERISTICS
Basic dimensions according to the Standard
National American. With threaded
connection NPT per ANSI/ASME B1.20.1

TECNICAL DATA					
MEASURE	THREAD LENGTH [mm] (L)	HEIGHT [mm] (P)	WIDTH [mm] (H)	THICKNESS [mm] (G)	WEIGHT [g]
1/4"	10,20*	26,00*	19,00*	4,80*	40*
3/8"	10,40*	26,00*	22,00*	4,80*	50*
1/2"	13,60*	33,00*	28,50*	6,40*	110*
3/4"	13,90*	38,10*	35,00*	6,40*	180*
1"	17,30*	42,90*	44,50*	9,70*	330*
1 1/4"	18,00*	45,20*	57,00*	9,70*	620*
1 1/2"	18,40*	49,00*	64,00*	11,20*	720*
2"	19,20*	57,00*	76,20*	12,70*	1090*
2 1/2"	28,90*	60,00*	92,10*	15,70*	1920*
3"	30,50*	65,00*	108,00*	19,00*	2910*
4"	33,00*	68,20*	140,00*	22,00*	4840*

* Reference photos and measurements, subject to change without prior notice from the supplier or manufacturer.