



# TECTUL

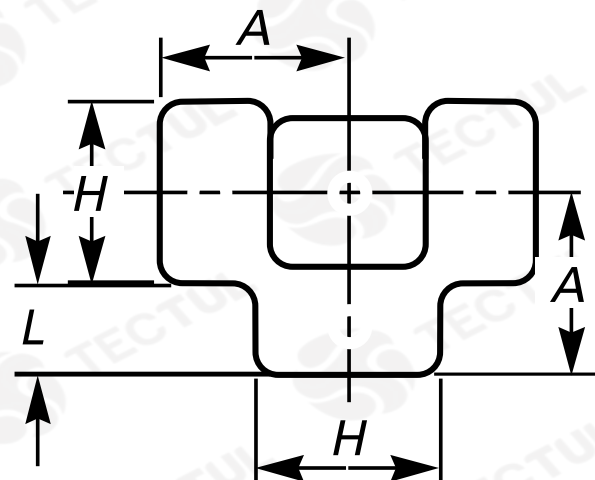
## TEE AC - CLASE 3000

### MATERIALES

### CARACTERÍSTICAS FÍSICAS



### CARACTERÍSTICAS DIMENSIONALES



\* Vista de sección transversal de tipo informativa. No representa una versión específica del accesorio o elemento.

**MATERIALES**

Fabricados en acero forjado ASTM A105

**CARACTERÍSTICAS FÍSICAS**

Posee extremos reforzados. Ideal para la conducción de gases, petróleo, lubricantes, vapor y aceites industriales.

**CARACTERÍSTICAS DIMENSIONALES**

Dimensiones básicas según la Norma Nacional estadounidense. Con conexión roscada NPT según ANSI/ASME B1.20.1

DATOS TÉCNICOS				
MEDIDA	LONGITUD DE ROSCA [mm] (L)	DISTANCIA CENTRO [mm] (A)	ANCHO [mm] (H)	PESO [g]
1/4"	10,20*	25,00*	25,40*	195*
3/8"	10,40*	28,50*	33,30*	381*
1/2"	13,60*	33,30*	38,00*	557*
3/4"	13,90*	38,00*	46,00*	882*
1"	17,30*	44,60*	55,60*	1360*
1 1/4"	18,00*	51,00*	62,00*	4646*
1 1/2"	18,40*	60,40*	75,50*	3222*
2"	19,20*	64,00*	84,00*	3506*
2 1/2"	28,90*	83,00*	102,00*	6990*
3"	30,50*	95,20*	121,00*	10190*
4"	33,00*	114,20*	152,30*	17236*

\* Fotos y medidas referenciales, sujetas a cambios sin previo aviso por parte del proveedor o fabricante.



# TECTUL

# TEE EQUAL - CLASS 3000

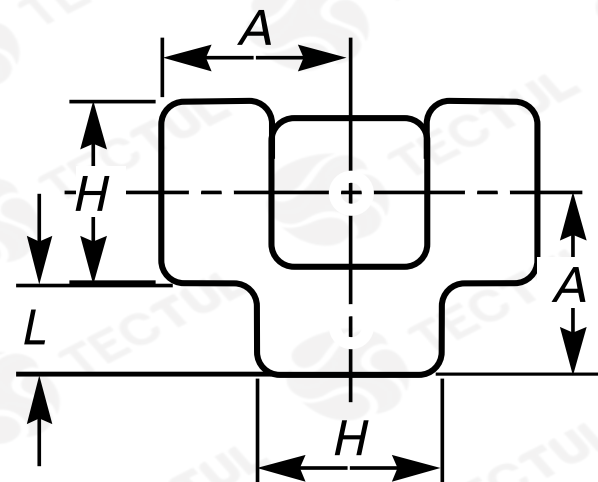
## MATERIALS



## PHYSICAL CHARACTERISTICS



## DIMENSIONAL CHARACTERISTICS



\* Informational cross-sectional view. Does not represent a specific version of the accessory or item.

## MATERIALS

Made of forged steel  
ASTM A105

## PHYSICAL CHARACTERISTICS

It has reinforced ends. Ideal for  
conduction of gases, oil, lubricants,  
steam and industrial oils.

## DIMENSIONAL CHARACTERISTICS

Basic dimensions according to the Standard  
National American. With threaded  
connection NPT per ANSI/ASME B1.20.1

## TECNICAL DATA

MEASURE	THREAD LENGTH [mm] (L)	CENTER DISTANCE [mm] (A)	WIDTH [mm] (H)	WEIGHT [g]
1/4"	10,20*	25,00*	25,40*	195*
3/8"	10,40*	28,50*	33,30*	381*
1/2"	13,60*	33,30*	38,00*	557*
3/4"	13,90*	38,00*	46,00*	882*
1"	17,30*	44,60*	55,60*	1360*
1 1/4"	18,00*	51,00*	62,00*	4646*
1 1/2"	18,40*	60,40*	75,50*	3222*
2"	19,20*	64,00*	84,00*	3506*
2 1/2"	28,90*	83,00*	102,00*	6990*
3"	30,50*	95,20*	121,00*	10190*
4"	33,00*	114,20*	152,30*	17236*

\* Reference photos and measurements, subject to change without prior notice from the supplier or manufacturer.