



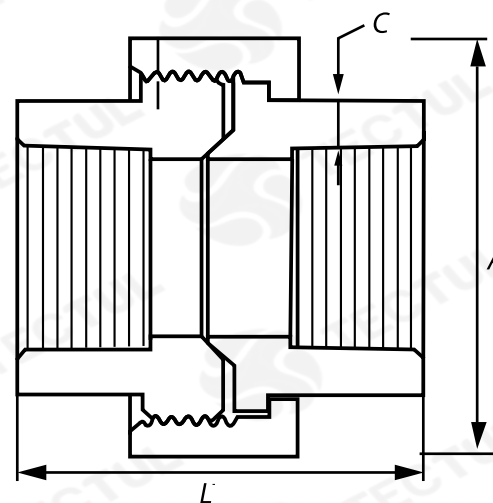
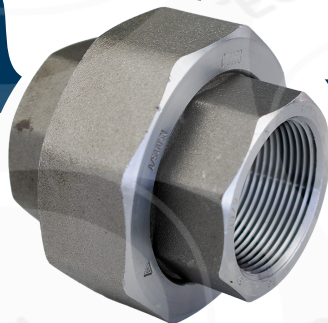
# TECTUL

## UNION UNIVERSAL HEXAGONAL CLASE 3000

### MATERIALES

### CARACTERÍSTICAS FÍSICAS

### CARACTERÍSTICAS DIMENSIONALES



\* Vista de sección transversal de tipo informativa. No representa una versión específica del accesorio o elemento.

**MATERIALES**

Fabricados en acero forjado  
ASTM A105

**CARACTERÍSTICAS FÍSICAS**

Posee extremos reforzados. Ideal para la conducción de gases, petróleo, lubricantes, vapor y aceites industriales.

**CARACTERÍSTICAS DIMENSIONALES**

Dimensiones básicas según la Norma Nacional estadounidense. Con conexión roscada NPT según ANSI/ASME B1.20.1

| DATOS TÉCNICOS |                |                  |                 |          |
|----------------|----------------|------------------|-----------------|----------|
| MEDIDA         | ANCHO [mm] (A) | ESPESOR [mm] (C) | ALTURA [mm] (L) | PESO [g] |
| 1/4"           | 42,20*         | 3,02*            | 37,60*          | 273*     |
| 3/8"           | 46,50*         | 3,20*            | 42,20*          | 228*     |
| 1/2"           | 50,80*         | 3,73*            | 49,00*          | 456*     |
| 3/4"           | 58,70*         | 3,91*            | 60,50*          | 456*     |
| 1"             | 61,50*         | 4,55*            | 70,60*          | 730*     |
| 1 1/4"         | 72,70*         | 4,85*            | 85,10*          | 1095*    |
| 1 1/2"         | 76,20*         | 5,08*            | 93,98*          | 1597*    |
| 2"             | 88,90*         | 5,54*            | 112,30*         | 2254*    |
| 2 1/2"         | 108,00*        | 7,01*            | 132,60*         | 3630*    |
| 3"             | 112,30*        | 7,62*            | 156,30*         | 5247*    |

\* Fotos y medidas referenciales, sujetas a cambios sin previo aviso por parte del proveedor o fabricante.



# TECTUL

## HEXAGONAL UNION CLASS 3000

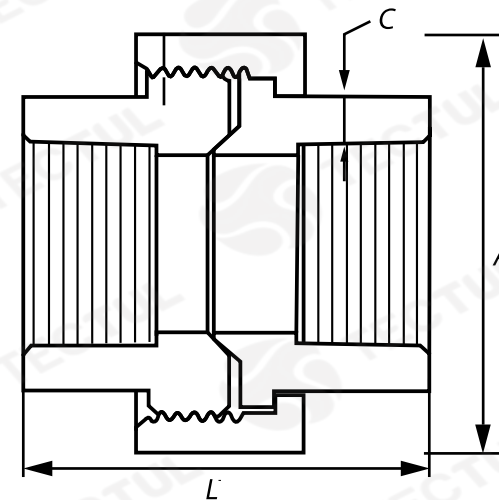
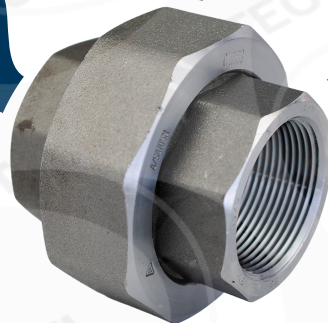
### MATERIALS



### PHYSICAL CHARACTERISTICS



### DIMENSIONAL CHARACTERISTICS



\* Informational cross-sectional view. Does not represent a specific version of the accessory or item.

### MATERIALS



Made of forged steel  
ASTM A105

### PHYSICAL CHARACTERISTICS



It has reinforced ends. Ideal for  
conduction of gases, oil, lubricants,  
steam and industrial oils.

### DIMENSIONAL CHARACTERISTICS



Basic dimensions according to the Standard  
National American. With threaded  
connection NPT per ANSI/ASME B1.20.1

### DATOS TÉCNICOS

| MEASURE | WIDTH<br>[mm] (A) | THICKNESS<br>[mm] (C) | HEIGHT<br>[mm] (L) | WEIGHT<br>[g] |
|---------|-------------------|-----------------------|--------------------|---------------|
| 1/4"    | 42,20*            | 3,02*                 | 37,60*             | 273*          |
| 3/8"    | 46,50*            | 3,20*                 | 42,20*             | 228*          |
| 1/2"    | 50,80*            | 3,73*                 | 49,00*             | 456*          |
| 3/4"    | 58,70*            | 3,91*                 | 60,50*             | 456*          |
| 1"      | 61,50*            | 4,55*                 | 70,60*             | 730*          |
| 1 1/4"  | 72,70*            | 4,85*                 | 85,10*             | 1095*         |
| 1 1/2"  | 76,20*            | 5,08*                 | 93,98*             | 1597*         |
| 2"      | 88,90*            | 5,54*                 | 112,30*            | 2254*         |
| 2 1/2"  | 108,00*           | 7,01*                 | 132,60*            | 3630*         |
| 3"      | 112,30*           | 7,62*                 | 156,30*            | 5247*         |

\* Reference photos and measurements, subject to change without prior notice from the supplier or manufacturer.