



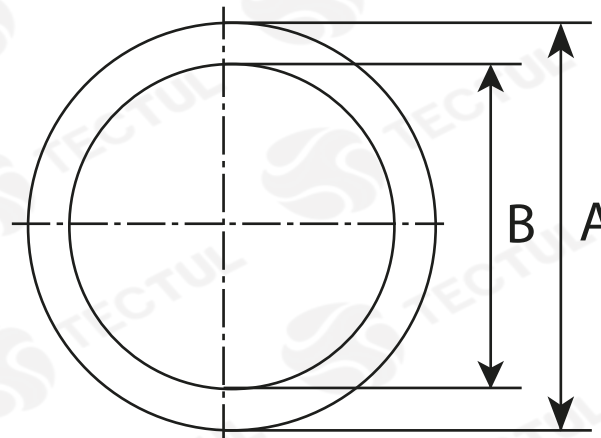
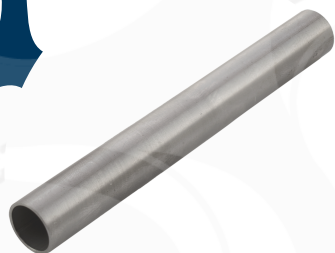
TECTUL

TUBING ACERO INOXIDABLE

MATERIALES

CARACTERÍSTICAS FÍSICAS

CARACTERÍSTICAS DIMENSIONALES



* Vista de sección transversal de tipo informativa. No representa una versión específica del accesorio o elemento.

DATOS TÉCNICOS

DIÁMETRO NOMINAL	DIÁMETRO EXTERNO [mm] [A]	ESPESOR PARED [mm]	CALIBRE	DIÁMETRO INTERNO [mm] [B]	PESO [g/m]
1/8"	3,18*	0,89*	20	1,40*	49,11*
	4,76*	0,89*	20	2,98*	84,83*
3/16"	4,76*	1,24*	18	2,27*	108,19*
	6,35*	0,89*	20	4,57*	125,01*
1/4"	6,35*	1,24*	18	3,86*	156,55*
	6,35*	1,65*	16	3,05*	191,08*
	7,94*	0,89*	20	6,16*	154,32*
5/16"	7,94*	1,24*	18	5,45*	214,44*
	7,94*	1,65*	16	4,64*	255,96*
	9,53*	0,89*	20	7,75*	189,15*
3/8"	9,53*	1,24*	18	7,04*	253,88*
	9,53*	1,65*	16	6,22*	320,25*
	12,70*	0,89*	20	10,92*	258,64*
1/2"	12,70*	1,24*	18	10,21*	351,21*
	12,70*	1,65*	16	9,40*	449,42*
	15,88*	0,89*	20	14,10*	328,14*
5/8"	15,88*	1,24*	18	13,39*	448,53*
	15,88*	1,65*	16	12,57*	578,60*
	19,05*	0,89*	20	17,27*	397,79*
3/4"	19,05*	1,24*	18	16,56*	545,86*
	19,05*	1,65*	16	15,75*	707,62*
	19,05*	2,11*	14	14,83*	879,95*
	19,05*	2,41*	13	14,22*	989,03*
	25,40*	0,89*	20	23,62*	536,78*
1"	25,40*	1,24*	18	22,91*	740,66*
	25,40*	1,65*	16	22,10*	965,96*
	25,40*	2,11*	14	21,18*	1209,73*
	25,40*	2,41*	13	20,57*	1366,43*

* Fotos y medidas referenciales, sujetas a cambios sin previo aviso por parte del proveedor o fabricante.

MATERIALES

Tubería fabricada en acero inoxidable 304L o 316L.

CARACTERÍSTICAS FÍSICAS

Facilidad para soldar, limpieza química para uso de oxígeno, acabado brillante

CARACTERÍSTICAS DIMENSIONALES

Tubería sin costura. Para industrias sanitarias, farmacéuticas, energía, petroquímica, química y alimentaria



TECTUL

STAINLESS STEEL TUBING

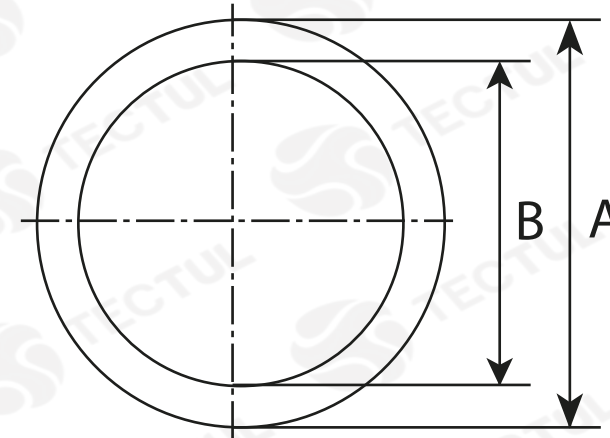
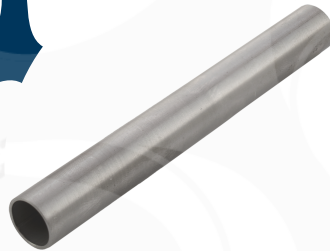
MATERIALS



PHYSICAL CHARACTERISTICS



DIMENSIONAL CHARACTERISTICS



* Informational cross-sectional view. Does not represent a specific version of the accessory or item.

MATERIALS
 Pipe made of stainless steel
 304L or 316L.

PHYSICAL CHARACTERISTICS
 Ease of welding, chemical cleaning
 for the use of oxygen,
 glossy finish

DIMENSIONAL CHARACTERISTICS

TECHNICAL DATA					
NOMINAL DIAMETER	EXTERNAL DIAMETER [mm] [A]	WALL THICKNESS [mm]	CALIBER	INTERNAL DIAMETER [mm] [B]	WEIGHT [g/m]
1/8"	3,18*	0,89*	20	1,40*	49,11*
3/16"	4,76*	0,89*	20	2,98*	84,83*
	4,76*	1,24*	18	2,27*	108,19*
1/4"	6,35*	0,89*	20	4,57*	125,01*
	6,35*	1,24*	18	3,86*	156,55*
	6,35*	1,65*	16	3,05*	191,08*
5/16"	7,94*	0,89*	20	6,16*	154,32*
	7,94*	1,24*	18	5,45*	214,44*
	7,94*	1,65*	16	4,64*	255,96*
3/8"	9,53*	0,89*	20	7,75*	189,15*
	9,53*	1,24*	18	7,04*	253,88*
	9,53*	1,65*	16	6,22*	320,25*
1/2"	12,70*	0,89*	20	10,92*	258,64*
	12,70*	1,24*	18	10,21*	351,21*
	12,70*	1,65*	16	9,40*	449,42*
5/8"	15,88*	0,89*	20	14,10*	328,14*
	15,88*	1,24*	18	13,39*	448,53*
	15,88*	1,65*	16	12,57*	578,60*
3/4"	19,05*	0,89*	20	17,27*	397,79*
	19,05*	1,24*	18	16,56*	545,86*
	19,05*	1,65*	16	15,75*	707,62*
	19,05*	2,11*	14	14,83*	879,95*
	19,05*	2,41*	13	14,22*	989,03*
1"	25,40*	0,89*	20	23,62*	536,78*
	25,40*	1,24*	18	22,91*	740,66*
	25,40*	1,65*	16	22,10*	965,96*
	25,40*	2,11*	14	21,18*	1209,73*
	25,40*	2,41*	13	20,57*	1366,43*

* Reference photos and measurements, subject to change without prior notice from the supplier or manufacturer.