



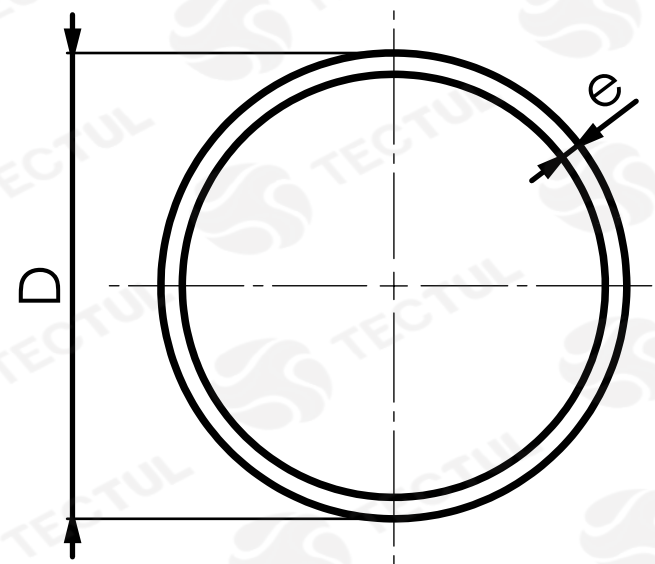
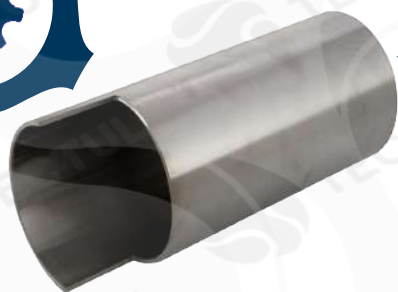
TECTUL

TUBO ACERO INOXIDABLE SANITARIO

MATERIALES

CARACTERÍSTICAS DIMENSIONALES

APLICACIONES



* Vista de sección transversal de tipo informativa. No representa una versión específica del accesorio o elemento.



MATERIALES

Tubería fabricada en acero inoxidable 304L o 316L. Norma ASTM A270.



APLICACIONES

Utilizado en una variedad de aplicaciones en las que se requieren especificaciones sanitarias estrictas.



CARACTERÍSTICAS DIMENSIONALES

Acabado Pulido grado 320G. Tubería sin costura.

DATOS TÉCNICOS

DIÁMETRO NOMINAL	DIÁMETRO EXTERNO [mm] [D]	ESPESOR PARED [mm] [e]	DIÁMETRO INTERNO [mm]	PESO [Kg/m]
1/2"	12,70*	1,65*	9,40*	0,45*
3/4"	19,10*	1,65*	15,80*	0,72*
1"	25,40*	1,65*	22,10*	0,99*
1-1/4"	31,75*	1,65*	28,45*	1,25*
1-1/2"	38,10*	1,65*	34,80*	1,52*
2"	50,80*	1,65*	47,50*	2,05*
2-1/2"	53,50*	1,65*	50,20*	2,57*
3"	76,20*	1,65*	72,90*	3,10*
4"	101,60*	4,11*	93,38*	5,29*

* Fotos y medidas referenciales, sujetas a cambios sin previo aviso por parte del proveedor o fabricante.



TECTUL

SANITARY STAINLESS STEEL PIPE

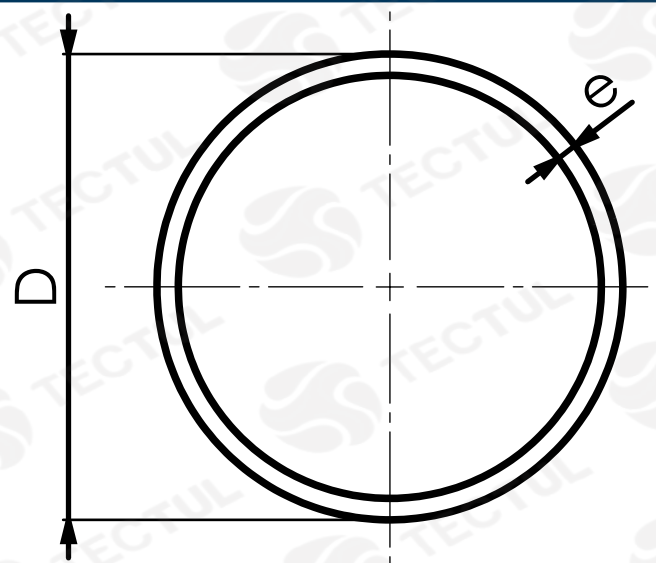
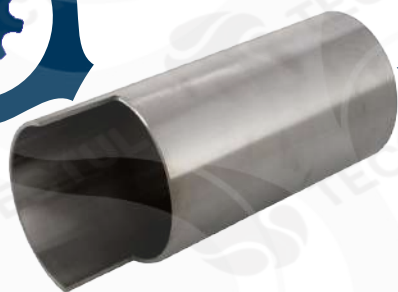
MATERIALS



APPLICATIONS



DIMENSIONAL CHARACTERISTICS



* Informational cross-sectional view. Does not represent a specific version of the accessory or item.

MATERIALS



Pipe made of stainless steel 304L or 316L. ASTM A270 Standard

APPLICATIONS



Used in a variety of applications where specifications are required strict sanitary

DIMENSIONAL CHARACTERISTICS



320G grade polished finish. Pipeline seamless.

TECHNICAL DATA

NOMINAL DIAMETER	EXTERNAL DIAMETER [mm] [D]	WALL THICKNESS [mm] [e]	INTERNAL DIAMETER [mm]	WEIGHT [Kg/m]
1/2"	12,70*	1,65*	9,40*	0,45*
3/4"	19,10*	1,65*	15,80*	0,72*
1"	25,40*	1,65*	22,10*	0,99*
1-1/4"	31,75*	1,65*	28,45*	1,25*
1-1/2"	38,10*	1,65*	34,80*	1,52*
2"	50,80*	1,65*	47,50*	2,05*
2-1/2"	53,50*	1,65*	50,20*	2,57*
3"	76,20*	1,65*	72,90*	3,10*
4"	101,60*	4,11*	93,38*	5,29*

* Reference photos and measurements, subject to change without prior notice from the supplier or manufacturer.